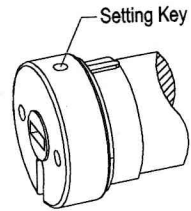


# ES25/ES16/ types of DC tubular motor instruction

## I Installing

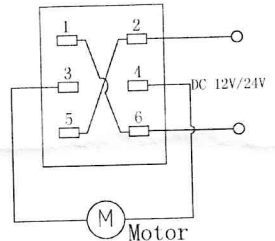
**Note:-**Install the motor wire ends on the same side as the power supply.

- The hole of "Setting key" on motor ends should face outwards (towards you)
- Tighten the brackets until the motor is horizontal.



## II Wiring

- ★According to the chart, connect the terminal 1 with terminal 6; Terminal 2 with terminal 5
- ★Connect the motor with the switch
- ★Connect the switch with the power supply



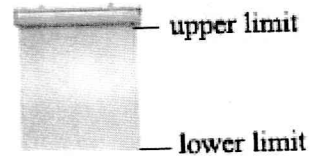
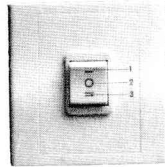
## III Distinguish & change tubular motor "UP" & "DOWN" direction

When motor is in Stop state, press "UP" key on switch

- ★ If the tubular motor roll up, press "STOP" key and then tubular motor stops operate. The motor running direction is not need to be changed.
- ★ If the tubular motor is roll down, press "STOP" key and then the tubular motor stops operate. At that time, change the position of the wire 3 with wire 4 or the wire 2 with wire 6. Then, the motor operation is opposite to the original.

## IV Motor programming

- UP
- STOP
- = DOWN



### 1、 Entering into the state of programming:

Keep the switch on the "UP" or "DOWN" position, and then, keep down the "Setting" key on motor head for more than 6 seconds. Motor gives out quick short alarm "Di, Di, Di" means the motor is entering into the state of programming.

### 2、 Setting of upper limit:

Keep the switch on "STOP" position, and then keep it on "UP" state, the motor continuously operate upwards. When the motor operation is near the end-point of the upper limit, keep the switch on "STOP" state, motor stops operation. Then press "UP" a time, and then press "STOP" a time, the motor will stop after operate around 2 angle. Repeat the above operation again and again until the motor operation reaches the end-point of the upper limit.

### 3、 Setting of lower limit:

Keep the switch on "DOWN" position, motor gives out quick short alarm "Di Di,Di". After 2 seconds, the motor continuously operate downwards. When the motor operation is near the end-point of the lower limit, keep switch on "STOP" state, motor stops operation. At that time, press "DOWN" a time, and then press "STOP" a time, the motor would operate around 2 angle and then stops. Repeat the above operation again and again until the motor operation reaches the end-point of the lower limit.

### 4、 Confirmation on motor limit setting:

Keep the switch on "UP" state, motor gives out quick short alarm "Di, Di ,Di" means the above limit setting is effective.

- 5、 Tentatively test whether the limit setting is normal by using the switch. If you would like to re-set the limit, please repeat all the limit operation from the 1st step.

## V Diagnostics

### If nothing works, check

-When the power supply is fitted correctly and well tightened, the motor will send out sound "Di,Di,Di".

### If the system does not stop, check

-If the motor running toward one direction continuously, the motor limit has not been setted successfully. Please re-set the entire limit.